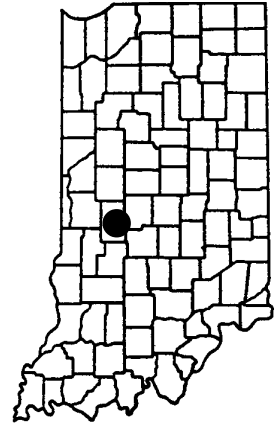


Big Walnut Nature Preserve

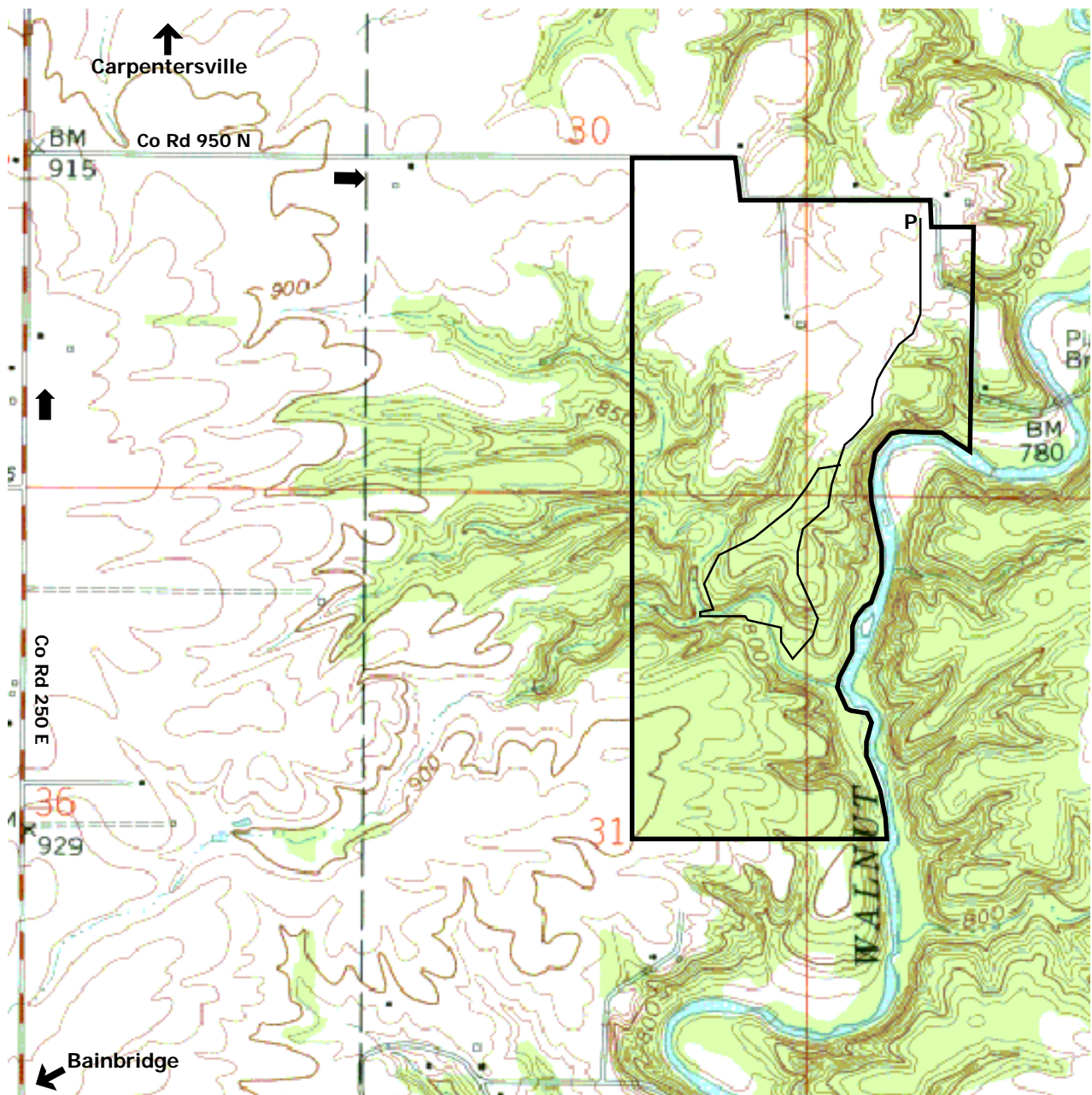
Tall Timbers Trail Unit

County: Putnam Size: 245 acres
Ownership: Nature Preserves - IDNR; The Nature Conservancy



Location and Access

Parking and trail. Take US 36 (Ernie Pyle Memorial Highway) west from Indianapolis to Bainbridge. From the traffic light (only one) in the middle of Bainbridge, turn right (north) onto N Washington St. Follow this road as it curves right (Co Rd 800 N), then left (Co Rd 250 E) to North Putnam High School. At the first gravel road north of the high school (Co Rd 950 N) turn right (east). Proceed just over 1.0 mi on this gravel road to a parking lot. A trail traverses the preserve.



Description:

Tall Timbers Trail is a 1.9-mile hike through some of the Big Walnut NP's most impressive woodlands. Dramatic ravines, several types of high quality forests with towering hardwoods, and the potential for uncommon and beautiful wildflowers such as the Indian cucumber root, the guyandotte beauty, showy orchis, and blue cohosh. Prepare for small stream crossings (wet feet).



Bloodroot



View from the Tall Timbers trail



Trillium and chickweed

Further Information:

Division of Nature Preserves. 402 W Washington St, Rm W267. Indianapolis IN 46204-2243. 317-232-4052. <http://www.in.gov/dnr/naturepreserve/>
The Nature Conservancy. 1505 N Delaware St Ste 200. Indianapolis IN 46202. 317-951-8818. <http://www.nature.org/wherewework/northamerica/states/indiana>