

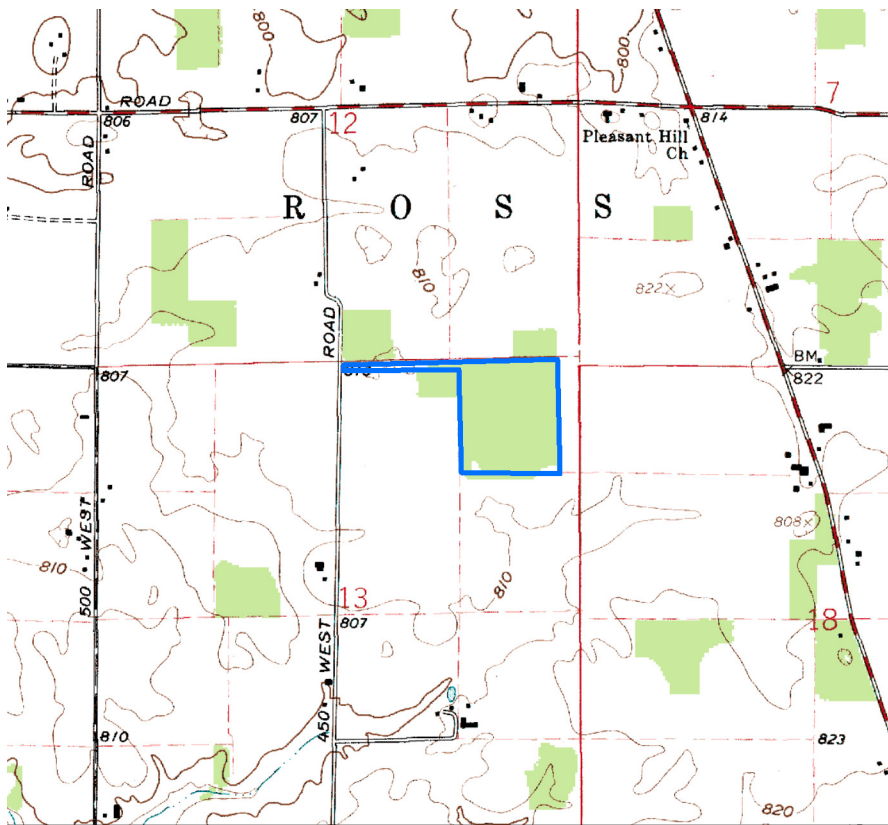
Bryan Nature Preserve (Eunice Hamilton Bryan)

County: Clinton Size: 29 acres
Ownership: Nature Preserves - IDNR



Location and Access

Parking lot, trail. Follow S.R. 38 about 7 mi. northwest of Franfort and then turn north on Co. Rd. 450W to a marked parking lot. A self-guiding nature trail with long and short loops traverses the preserve.



Description: This woods stands like an oasis surrounded by farmland. As you approach the preserve notice how tall, dense and even the forest canopy is, compared to woodlots which have been more heavily grazed and timbered. In the preserve, great white oaks, 4 feet in diameter, are found with large red oak, beech, basswood, and shagbark hickory on drier sites. Smaller poorly drained spots along the northern edge of the woods have pin oak, bur oak and red maple. Spicebush, poison ivy, greenbrier, black haw, and pawpaw are common shrubs in drier areas, while buttonbush and winterberry surround a small pond.

Spring wildflowers include yellow, and white trout lily, Dutchman's breeches, toothwort, and spring beauty. These are soon followed by wild phlox, Virginia waterleaf, and wild crane's-bill.

Further Information:

Division of Nature Preserves, 402 W. Washington St., Rm W267, Indianapolis, IN 46204. 317-232-0209.
www.in.gov/dnr/naturepr