



FERDINAND/PIKE STATE FOREST

THE RANGER

APRIL 2011

A Look at Our New Storage Building



Before

In the fall of 2010 an outdoor equipment storage area behind the current office was cleaned up, leveled, and drainage installed to prepare for the new 100' x 34' storage building. This picture was taken looking down from the Fossil Lake dam.

After

Here you can see that the building is almost complete. Some of the final tasks include installing guttering, pouring an apron, and finishing the exterior with locally produced poplar siding. The new building will provide some much needed storage space to keep our equipment out of the weather.



2011/2012 TIMBER HARVESTS

One of the major activities that occurs with our overall resource management is the commercial harvest of timber. Harvesting trees allows us to manage the forest for wildlife, ecological and timber values. It also allows us to capture a value that can generate additional economic activity in the local community and eventually a quality product for consumers. All timber sale activities are carefully planned and monitored to protect soil, water, wildlife, historic and ecological values. The following tracts are being considered for timber sales in 2011-12:

Compartment 2, Tract 4

This tract is located in Dubois County in Sections 7, 8, 17 and 18 of T3S, R3W and about ½ mile north of the Ferdinand State Forest office. The sale is expected to generate an estimated 207,500 board feet from the tract's 138 acres.

Compartment 7, Tract 3

This tract is located in Perry County in Section 10, T4S, R3W and about 2.5 miles north of Bristow. This harvest is expected to remove about 300,000 board feet from 70 acres.

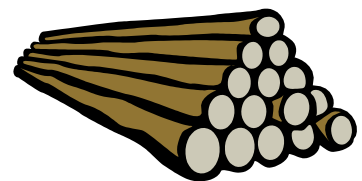
Compartment 7, Tracts 4 & 5

These tracts are located in Perry County in Sections 3 & 10, T4S, R3W and about 3 miles north of Bristow. This harvest is expected to remove about 200,000 board feet from the tract's 135 combined acres.

Compartment 12, Tract 1

This area is in Pike County in Sections 10, 11 and 14 in T2S, R7W. This tract includes the main service area of Pike State Forest and is located about 3.5 miles southeast of Winslow. The sale is expected to remove about 176,000 board feet from 156 acres.

State forest management guides and timber sales are available for public inspection and comment at <http://www.in.gov/dnr/forestry/3631.htm>



Ask a Forester by Doug Brown

Question: What is going to be the firewood policy for campers this summer?

Answer: Firewood has been a major issue at Ferdinand and Pike State Forests, and most DNR properties, for the last several years. The invasion of the Emerald Ash Borer (EAB), a beetle from Asia, has necessitated changes in DNR policy in order to slow down the spread of this destructive and costly bug. The EAB spreads very slowly on its own but can be transported hundreds or even thousands of miles in firewood. In fact, nearly all of the new outbreaks of EAB the last several years have been in firewood. But it is more than just the EAB because there are at least 140 known pests and plant diseases that can be transported by firewood. The last couple of years have been especially hard at Ferdinand State Forest because EAB has been documented in Dubois County. All hardwood firewood from infected counties has been prohibited on all DNR properties, even properties within the infected county.

For 2011 the following firewood will be allowed at Ferdinand and Pike State Forests:

- Kiln dried scrap lumber
- Firewood from home if the bark and ½ inch of sapwood have been removed. This includes wood from EAB quarantined counties.
- Firewood purchased from a vendor or grocery store and accompanied by a State or Federal compliance stamp. See examples below:



You will still be able to collect firewood from the property to burn while you are here. That wood must be dead and on the ground and should only be enough for your visit. No chainsaws, please!

*Our office hours are Mondays, Tuesdays, & Fridays: 7:30-3:00 pm
Wednesdays & Thursdays: Call 812-367-1524 and leave a message.*

FERDINAND/PIKE STATE FOREST

6583 East State Road 264

Ferdinand, IN 47532

Phone: (812) 367-1524

Fax: (812) 367-2846

ferdinandsf@dnr.in.gov



100%

From well-managed forests

Cert. no. SCS-FM/COC-00099N
www.fsc.org
© 1996 Forest Stewardship Council



SUSTAINABLE
FORESTRY
INITIATIVE

Certificate Number: 6L841-S1

Would you like to receive the newsletter by email?

Contact us at ferdinandsf@dnr.in.gov



Find us on
Facebook

OPEN HOUSE

The 10th annual Ferdinand/Pike State Forest open house will be held on Saturday, April 30, 2011 from 1:00–4:00 pm at the Sycamore Shelters. A property/forest management tour will be at 2 pm.

There will be displays with information about budget issues, recreational activities, staffing, major projects, the 2008-2013 Division of Forestry Strategic Plan, invasive species control and forest resource management.

Property personnel will be available for questions and comments. Light refreshments will be served.