

# Indiana's Species of Greatest Conservation Need

Also available online at [www.endangeredwildlife.in.gov](http://www.endangeredwildlife.in.gov)

STATE

**STATE ENDANGERED:** Any animal species whose prospects for survival or recruitment within the state are in immediate jeopardy and are in danger of disappearing from the state. This includes all species classified as endangered by the federal government that occur in Indiana.

**SPECIAL CONCERN:** Any animal species requiring monitoring because of known/suspected limited abundance or distribution or because of a recent change in legal status or required habitat.

FEDERAL

**FEDERALLY ENDANGERED:** Any species that is in danger of extinction throughout all or a significant portion of its range. Designated with (FE).

**FEDERALLY THREATENED:** Any species that is likely to become endangered within the foreseeable future throughout all or a significant portion of its range. Designated with (FT).

**FEDERAL CANDIDATE:** These species have been submitted for review for protection under the Federal Endangered Species Act. If added to the federal list, they will automatically be considered a state endangered species. Designated with (FC).

## M A M M A L S

### State Endangered

Gray Myotis (FE)	<i>Myotis grisescens</i>
Indiana Myotis (FE)	<i>Myotis sodalis</i>
Evening Bat	<i>Nycticeius humeralis</i>
Swamp Rabbit	<i>Sylvilagus aquaticus</i>
Franklin's Ground Squirrel	<i>Spermophilus franklinii</i>
Allegheny Woodrat	<i>Neotoma magister</i>



### Special Concern

Smoky Shrew	<i>Sorex fumeus</i>
Pygmy Shrew	<i>Sorex hoyi</i>
Star-nosed Mole	<i>Condylura cristata</i>
Southeastern Myotis	<i>Myotis austroriparius</i>
Little Brown Myotis	<i>Myotis lucifugus</i>
Northern Myotis	<i>Myotis septentrionalis</i>
Silver-haired Bat	<i>Lasionycteris noctivagans</i>
Eastern Pipistrelle	<i>Perimyotis subflavus</i>
Red Bat	<i>Lasiurus borealis</i>
Hoary Bat	<i>Lasiurus cinereus</i>
Rafinesque's Big-eared Bat	<i>Corynorhinus rafinesquii</i>
Plains Pocket Gopher	<i>Geomys bursarius</i>
River Otter	<i>Lontra canadensis</i>
Least Weasel	<i>Mustela nivalis</i>
Badger	<i>Taxidea taxus</i>
Bobcat	<i>Lynx rufus</i>

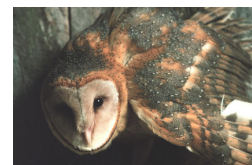
## B I R D S

### State Endangered

Trumpeter Swan	<i>Cygnus buccinator</i>
American Bittern	<i>Botaurus lentiginosus</i>
Least Bittern	<i>Ixobrychus exilis</i>
Black-crowned Night-Heron	<i>Nycticorax nycticorax</i>
Yellow-crowned Night-Heron	<i>Nyctanassa violacea</i>
Osprey	<i>Pandion haliaetus</i>
Northern Harrier	<i>Circus cyaneus</i>
Peregrine Falcon	<i>Falco peregrinus</i>
Black Rail	<i>Laterallus jamaicensis</i>
King Rail	<i>Rallus elegans</i>
Virginia Rail	<i>Rallus limicola</i>
Common Moorhen	<i>Gallinula chloropus</i>
Whooping Crane (FE)	<i>Grus americana</i>
Piping Plover (FE)	<i>Charadrius melodus</i>
Upland Sandpiper	<i>Bartramia longicauda</i>
Least Tern (FE)	<i>Sternula antillarum</i>
Black Tern	<i>Chlidonias niger</i>
Barn Owl	<i>Tyto alba</i>
Short-eared Owl	<i>Asio flammeus</i>
Loggerhead Shrike	<i>Lanius ludovicianus</i>
Sedge Wren	<i>Cistothorus platensis</i>
Marsh Wren	<i>Cistothorus palustris</i>
Golden-winged Warbler	<i>Vermivora chrysoptera</i>
Kirtland's Warbler (FE)	<i>Dendroica kirtlandii</i>
Cerulean Warbler	<i>Dendroica cerulea</i>
Henslow's Sparrow	<i>Ammodramus henslowii</i>
Yellow-headed Blackbird	<i>Xanthocephalus xanthocephalus</i>

### Special Concern

Great Egret	<i>Ardea alba</i>
Mississippi Kite	<i>Ictinia mississippiensis</i>
Bald Eagle	<i>Haliaeetus leucocephalus</i>
Sharp-shinned Hawk	<i>Accipiter striatus</i>
Red-shouldered Hawk	<i>Buteo lineatus</i>
Broad-winged Hawk	<i>Buteo platypterus</i>
Sandhill Crane	<i>Grus canadensis</i>
American Golden-Plover	<i>Pluvialis dominica</i>
Solitary Sandpiper	<i>Tringa solitaria</i>
Greater Yellowlegs	<i>Tringa melanoleuca</i>
Ruddy Turnstone	<i>Arenaria interpres</i>
Buff-breasted Sandpiper	<i>Tryngites subruficollis</i>
Short-billed Dowitcher	<i>Limnodromus griseus</i>
Wilson's Phalarope	<i>Phalaropus tricolor</i>
Common Nighthawk	<i>Chordeiles minor</i>
Whip-poor-will	<i>Caprimulgus vociferus</i>
Black-and-white Warbler	<i>Mniotilta varia</i>
Worm-eating Warbler	<i>Helmitheros vermivorum</i>
Hooded Warbler	<i>Wilsonia citrina</i>
Western Meadowlark	<i>Sturnella neglecta</i>



## FISH

### State Endangered

Northern Brook Lamprey	<i>Ichthyomyzon fossor</i>
Lake Sturgeon	<i>Acipenser fulvescens</i>
Redside Dace	<i>Clinostomus elongatus</i>
Pallid Shiner	<i>Hybopsis amnis</i>
Greater Redhorse	<i>Moxostoma valenciennesi</i>
Northern Cavefish	<i>Amblyopsis spelaea</i>
Bantam Sunfish	<i>Lepomis symmetricus</i>
Variagate Darter	<i>Etheostoma variatum</i>
Channel Darter	<i>Percina copelandi</i>
Gilt Darter	<i>Percina evides</i>



### Special Concern

Pugnose Shiner	<i>Notropis anogenus</i>
Bigmouth Shiner	<i>Notropis dorsalis</i>
Longnose Dace	<i>Rhinichthys cataractae</i>
Longnose Sucker	<i>Catostomus catostomus</i>
Northern Madtom	<i>Noturus stigmosus</i>
Ohio River Muskellunge	<i>Esox masquinongy ohioensis</i>
Cisco	<i>Coregonus artedi</i>
Lake Whitefish	<i>Coregonus clupeaformis</i>
Trout-perch	<i>Percopsis omiscomaycus</i>
Slimy Sculpin	<i>Cottus cognatus</i>
Western Sand Darter	<i>Ammocrypta clara</i>
Spotted Darter	<i>Etheostoma maculatum</i>
Cypress Darter	<i>Etheostoma proeliare</i>
Tippecanoe Darter	<i>Etheostoma tippecanoe</i>
Banded Pygmy Sunfish	<i>Elassoma zonatum</i>

## MOLLUSKS\*

### State Endangered

Fanshell (FE)	<i>Cyprogenia stegaria</i>
White Catspaw (FE)	<i>Epioblasma obliquata perobliqua</i>
Northern Riffleshell (FE)	<i>Epioblasma torulosa rangiana</i>
Tubercled Blossom (FE)	<i>Epioblasma torulosa torulosa</i>
Snuffbox	<i>Epioblasma triquetra</i>
Longsolid	<i>Fusconaia subrotunda</i>
Pink Mucket (FE)	<i>Lampsilis abrupta</i>
White Wartyback (FE)	<i>Plethobasus cicatricosus</i>
Orangefoot Pimpleback (FE)	<i>Plethobasus cooperianus</i>
Sheepnose (FC)	<i>Plethobasus cyphus</i>
Clubshell (FE)	<i>Pleurobema clava</i>
Rough Pigtoe (FE)	<i>Pleurobema plenum</i>
Pyramid Pigtoe	<i>Pleurobema rubrum</i>
Fat Pocketbook (FE)	<i>Potamilus capax</i>
Rabbitsfoot	<i>Quadrula cylindrica cylindrica</i>

### Special Concern

Wavyrayed Lamppussel	<i>Lampsilis fasciola</i>
Round Hickorynut	<i>Obovaria subrotunda</i>
Ohio Pigtoe	<i>Pleurobema cordatum</i>
Kidneyshell	<i>Ptychobranchus fasciolaris</i>
Salamander Mussel	<i>Simpsonaias ambigua</i>
Purple Lilliput	<i>Toxolasma lividus</i>
Ellipse	<i>Venustaconcha ellipsiformis</i>
Rayed Bean (FC)	<i>Villosa fabalis</i>
Little Spectaclecase	<i>Villosa lienosa</i>
Pointed Campeloma	<i>Campeloma decisum</i>
Swamp Lymnaea	<i>Lymnaea stagnalis</i>

\* It is illegal to take or possess live mussels and mussel shells of any species of native mussel from the waters of Indiana.

## AMPHIBIANS

### State Endangered

Hellbender	<i>Cryptobranchus alleganiensis</i>
Mole Salamander	<i>Ambystoma talpoideum</i>
Green Salamander	<i>Aneides aeneus</i>
Red Salamander	<i>Pseudotriton ruber</i>
Crawfish Frog	<i>Lithobates areolatus</i>
Plains Leopard Frog	<i>Lithobates blairi</i>



### Special Concern

Common Mudpuppy	<i>Necturus maculosus</i>
Streamside Salamander	<i>Ambystoma barbouri</i>
Blue-spotted Salamander	<i>Ambystoma laterale</i>
Four-toed Salamander	<i>Hemidactylium scutatum</i>
Northern Cricket Frog	<i>Acris crepitans</i>
Northern Leopard Frog	<i>Lithobates pipiens</i>

## REPTILES

### State Endangered

Alligator Snapping Turtle	<i>Macrochelys temminckii</i>
Eastern Mud Turtle	<i>Kinosternon subrubrum</i>
Spotted Turtle	<i>Clemmys guttata</i>
Blanding's Turtle	<i>Emydoidea blandingii</i>
River Cooter	<i>Pseudemys concinna</i>
Ornate Box Turtle	<i>Terrapene ornata</i>
Scarletsnake	<i>Cemophora coccinea</i>
Kirtland's Snake	<i>Clonophis kirtlandii</i>
Copper-bellied Watersnake (FT <sup>†</sup> )	<i>Nerodia erythrogaster</i>
Smooth Greensnake	<i>Ophedrys vernalis</i>
Southeastern Crowned Snake	<i>Tantilla coronata</i>
Butler's Gartersnake	<i>Thamnophis butleri</i>
Cottonmouth	<i>Agkistrodon piscivorus</i>
Timber Rattlesnake	<i>Crotalus horridus</i>
Massasauga (FC)	<i>Sistrurus catenatus</i>



### Special Concern

Eastern Box Turtle	<i>Terrapene carolina</i>
Red-bellied Mudsnake	<i>Farancia abacura</i>
Rough Greensnake	<i>Ophedrys aestivus</i>
Western Ribbonsnake	<i>Thamnophis proximus</i>

<sup>†</sup> Only the northern population of copperbelly water snake is federally threatened.

Support the conservation of Indiana's nongame and endangered species by donating to the Nongame Fund. The money you donate goes directly to the protection and management of more than 750 wildlife species in Indiana. Look for the eagle logo on your Indiana state tax form to donate all or part of your refund. Or to donate directly write to:  
Nongame Fund, 402 W. Washington St. Rm W273, Indianapolis, IN 46204.

